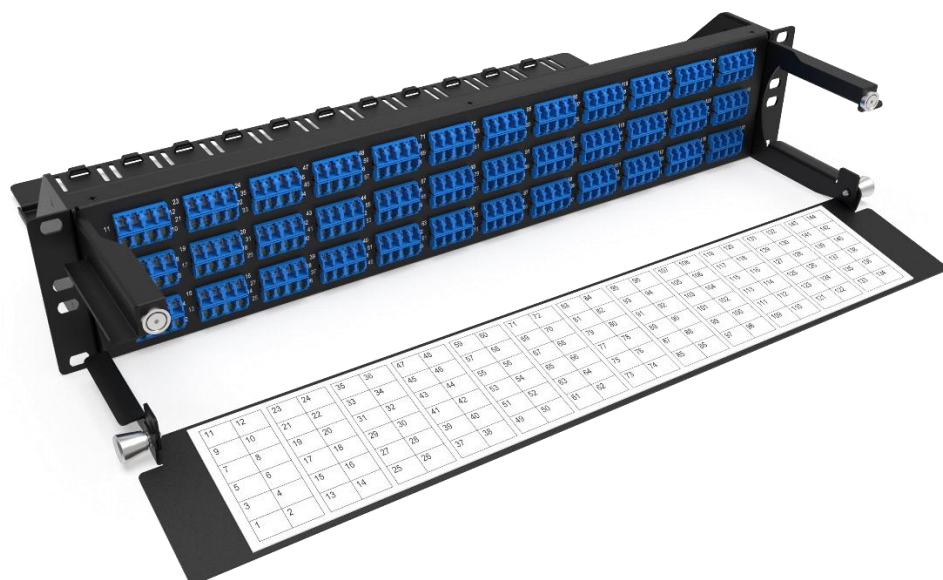


2U PATCHING PANEL (UP TO 288FO) - BPP05



Browse on Mobile



Browse on Web

NEXCONEC® 2U Patching Panel is designed with utmost precision and durability to provide housing for connections of an incoming preterm or trunk from the rear of the panel to patch cords on the front. Its open frame high-density design ensures quick and easy installation as well as enables accommodation of up to 288FO with LC.

This patching panel comes with 2 rear bars (Included in the package), Standard size rear bar with 206mm Depth + Short size rear bar with 156mm depth, allowing you to customize your setup according to your specific requirements.

FEATURES

- ✓ 2U height with SC, LC or MPO Thru Adapters
- ✓ Up to 288FO in LC
- ✓ Channel to route the patch cords to the rear of the rack within the 2U space
- ✓ Available in shuttered dust proof LC adapters
- ✓ 2 rear bars (Standard & Short) included in the package
- ✓ RoHS, REACH and SVHC

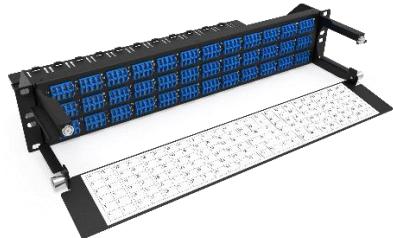
APPLICATIONS

- ✓ Datacenter & Enterprise network
- ✓ Indoor application
- ✓ Accepts Indoor and Outdoor Pre-terminated cables

SPECIFICATIONS

Parameters	Value
Mounting Type	Rack 19"
Opening Type	Fixed
Access Type	Front access
Front Cable Management	Removable hinged door
Cable Entry Direction	Rear and Front
Rear Cable Management	Support bar
Slot Type	SC Duplex / LC Quad or MTP/MPO Duplex Footprint
Number of Ports	72 Ports
Fiber Capacity	Up to 288 in LC / 144 in SC
Height Unit	2U
Dimensions (W x D x H in MM)	446 x 297.70 x 88 mm (with Standard Rear Bar) 446 x 247.70 x 88 mm (with Short Rear Bar)
Material	Cold rolled steel
Housing Color	Black
Application	Indoor IP20
Lockable	No
Net Weight	3 Kg

ORDER INFORMATION

Product	Part Number	Product Description
	BPP05	2U Patching Panel 72 Ports SC DX/LC QD (Up to 288LC)

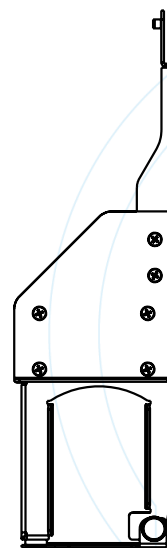
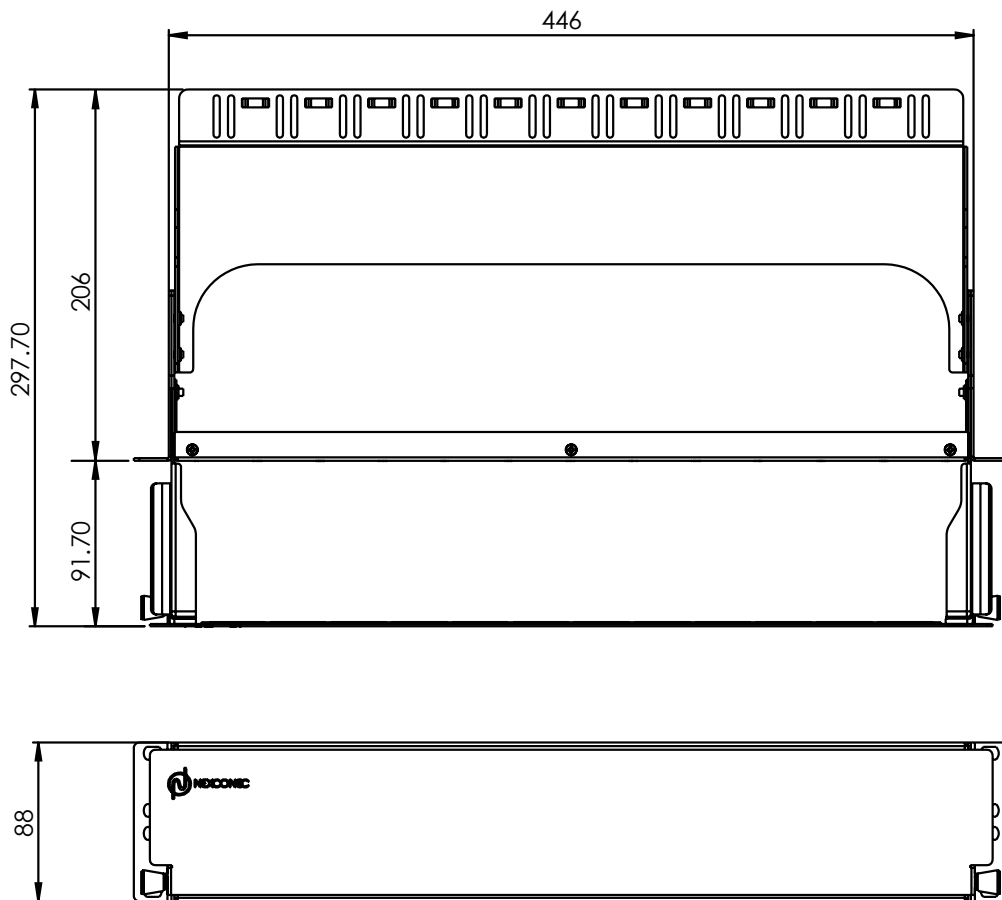
CUSTOM PANEL KIT CONFIGURATOR

BPP05	1	2
-------	---	---

BPP05	1	Adapter Type	2	Adapter Color
	S1	SC	L	Blue SM
	S2	SC/APC	N	Green SM
	L1	LC	Q	Aqua OM3
	L2	LC/APC	V	Erika Violet OM4
	M1	MTP/MPO Key Up/Down	L	Lime OM5
	M2	MTP/MPO Key Up/Up	-	Nil for MPO

TECHNICAL DRAWING

Standard Rear Bar



Short Rear Bar

