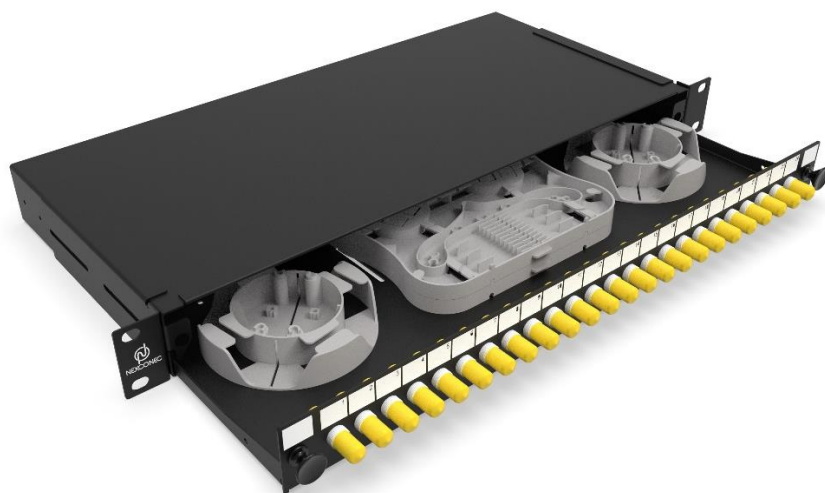


## 1U 24 PORTS FC/ST SLIDING PATCH PANEL - SPP24F



Browse on Mobile

 Browse on Web

NEXCONEC® sliding patch panel accepts 24 adapters FC or ST within 1U space. The panel can be pre-loaded completely with the required adapters or pre-loaded with pigtails and splice accessories. The tray is locked by 2 plastic latches and lowers to a 45deg angle when fully extended. Installation and labelling are simple and easy.

### FEATURES

- ✓ Recessed panel bracket mounting
- ✓ Up to 24FO in 1U space
- ✓ Fits standard 19" rack
- ✓ 4 Rear Cable entries

### APPLICATIONS

- ✓ Enterprise network & Datacenter
- ✓ Indoor application
- ✓ Accepts Indoor and Outdoor Pre-terminated cables and conventional Splicing

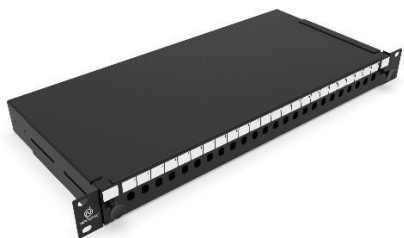
## SPECIFICATIONS

<b>Mounting Type</b>	Rack 19"
<b>Height Unit</b>	1U
<b>Material</b>	Cold rolled steel
<b>Housing Color</b>	Black
<b>Application</b>	Indoor IP20
<b>Lockable</b>	No
<b>Dimensions (W x D x H in MM)</b>	482 x 205 x 44.4
<b>Net Weight</b>	2.5 Kg

## DESIGN - HARDWARE

<b>Opening Type</b>	Sliding Tray
<b>Access Type</b>	Front access
<b>Front Cable Management</b>	Optional
<b>Cable Entry Direction</b>	Rear
<b>Rear Cable Management</b>	4 Cable Entries (OD: 2x PG13.5 and 2x PG16 mm)
<b>Slot Type</b>	FC/ST
<b>Number of Slots</b>	24
<b>Fiber Capacity</b>	24

## ORDER INFORMATION

Product	Part Number	Product Description
	<b>SPP24F</b>	1U 24 Ports FC/ST Sliding Patch Panel Unloaded

## CUSTOM PANEL KIT CONFIGURATOR

SPP24F	1	2	3	4
--------	---	---	---	---

SPP24F	1	Adapter Type	2	Fiber Count	3	Adapter Type	4	Pigtails
	F1	FC	6	6FO	L	Single mode	-	No Pigtails / Leave blank
	F2	FC/APC	12	12FO	N	Multimode	A1	SM OS2 G657A1
	T1	ST	24	24FO			O1	MM OM1
							O3	MM OM3
							O4	MM OM4

- Panels KIT include Splice Kit (Splice Tray FSP01, Spool FSP02 and Cable Gland)
- Pigtails Tight Buffer Rainbow colored per default. Add E after pigtails for **Easy strip**, Example A1E
- Ask sales for other products and configuration not shown. [sales@nexconec.com](mailto:sales@nexconec.com)